



MIX IT UP!

iSwix
Vortex Mixer

iSwix

Vortex Mixer

The sign of a quality Vortex Mixer is consistent reliability and performance. A researcher in a laboratory has to produce consistent and precise result, which calls for equally consistent equipment, but more often than not, products from mass-market manufacturers tend to offer lackluster performance due to the use of low-quality components and materials in a bid to reduce manufacturing costs and increase profits. The result are products that don't deliver sufficient power to properly mix samples.

We, at Neuation take pride in our extensive production process which involves a long R&D process based on user feedback and opinions. As a result, our products are informed by real-world usage statistics which help us build products that cater to every requirement of the user. In addition to superior performance and reliability, the presence of class-leading features such as inbuilt counter balance, optional attachments and IP21 rating deliver an exceptional usage experience.



Product Features



AC Synchronous Motor
For Efficient Noiseless
Operation



Adjustable Speed Range
Upto 2800 RPM With An
Accuracy Of +/-5%



Orbital Diameter
Of 4 MM

Inbuilt Counter Balance
Ensures Stable Operation For
Complete Peace-of-mind



3-way Switch For Touch,
Continuous & Stand-by Mode
For Unmatched Convenience



Small Footprint Saves
Valuable Bench Space And
Can Also Be Used Inside
Hoods And Cold Rooms



Product Features



Visual Indication Marker
For Max Speed With
Attachments



Non-corrosive Body
For Long And Durable
Performance.

IP21 Compliant Design
Makes It Spill Safe



Standard Attachments



Round Disc

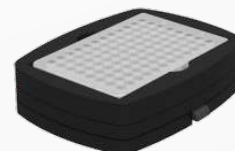


Cup Attachment

Optional Attachments



Micro Centrifuge Tube
20 x 1.5/2ml



96 Well Micro Plate



Flask

Specifications

iSwix	
Max Speed	2800 RPM
Orbital diameter	4 mm
Motor type	AC Synchronous
Max Load Capacity	500 gm
Speed accuracy	± 5%
Different modes Touch, Stand-by & Continuous mode	Touch, Stand-by & Continuous mode
Dimensions	205 x 136 x 138.5 mm
Power Supply	220 - 240VAC, 50Hz
Ambient temperature	5 to 40°C
Weight	3 kg
Optional Attachments (not included)	Universal platform for attaching either microplate or microtube or flask Attachments

Ordering Information

iSwix		
Product Name	Cat #	Details
iSwix	VM-1210 EU/US/UK/AU	Analog Vortex Mixer
Attachment	VM-A1	Cup Attachment
	VM-A6	Round Disc

Accessories



Microplate
CAT. NO. # VM-A2



Flask
CAT. NO. # VM-A3



Micro Centrifuge Tubes
CAT. NO. # VM-A4

NEUATION
TECHNOLOGIES
www.neuation.com

AN ISO 9001 : 2015 & ISO 13485 : 2016 CERTIFIED MFG. COMPANY

*We also execute OEM projects. Specifications can be changed without notice for quality improvement.